



# Official World Wide Web Directory

Welcome to the 5th Edition of *New Riders' World Wide Web Directory*. This CD-ROM provides the printed book in electronic form, to help you browse the World Wide Web.

## THREE VERSIONS OF DIRECTORY SOFTWARE TO CHOOSE FROM

This CD-ROM contains three electronic versions of the directory (Standard, Enhanced, and Help), which provide alternate methods of navigating through the electronic content. Each version contains more than 10,000 web links! To use the software, you should have a web browser installed on your system.

### STANDARD

The **Standard** version is designed to work with any web browser. It organizes all links for a given category within a single HTML document. Files take a little longer to load, but you can quickly get to any listing by scrolling the page. HTML files for the Standard version reside in the \STANDARD directory of the CD-ROM. The document which serves as entry point to the Standard version is **\STANDARD\WELCOME.HTM**.

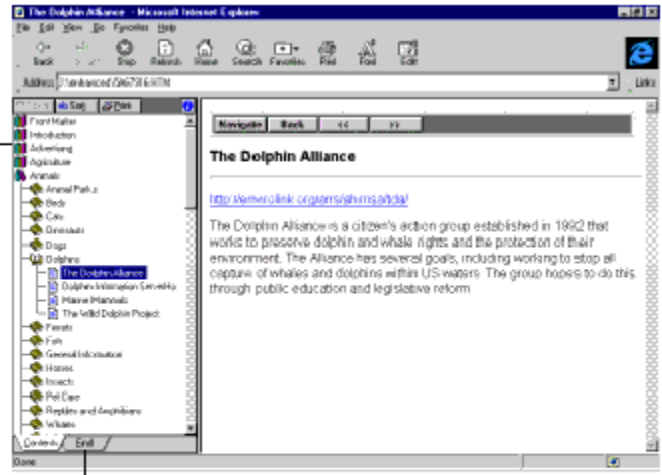
If your browser opens HTML files by association (files of type .HTM), you can open the Standard version by clicking on the "Standard Directory" icon in the program group. Most browsers also allow you to open HTML files by dragging an HTML file from Program Manager or the Windows 95 Explorer to the window of your running web browser. For example, if you use the AOL browser, you can drag and drop \standard\welcome.htm into an open AOL browser window to open the directory.

### ENHANCED

In the **Enhanced** version, each web site is described in its own HTML file, so pages load very quickly. The Enhanced version is optimized for use with Microsoft Internet Explorer, or with Netscape. HTML files for the Enhanced version reside in the \ENHANCED directory of the CD-ROM. The document which serves as entry point to the Enhanced version directory is **\ENHANCED\WELCOME.HTM**. To open the enhanced version, double-click the "Enhanced Directory" icon in the program group, or drag and drop \enhanced\welcome.htm into the window of your running browser.

If you use Netscape 2.0 (or higher) or Internet Explorer 3.0 (or higher), we heartily recommend that you install Virtual Media's browser enhancer before using the Enhanced version of the directory. The browser enhancer adds a tracking table of contents, hierarchical index and full text search to the enhanced version. Installation of the browser enhancer is optional. The figure below shows how Internet Explorer looks following installation of the browser enhancer.

Heirarchical Table of Contents allows you to quickly locate topics of interest.



Find tab allows to you locate topics using keyword search.

To install the browser enhancer, run ENHANCER.EXE from the \ENHANCED\ENHANCER directory of the CD-ROM. You can also install the browser enhancer by double-clicking the "Install Browser Enhancer" icon in the program group. For additional information concerning Virtual Media's browser enhancer, direct your web browser to <http://www.virtualmedia.com.au>. Please note that the browser enhancer does not work with Standard version HTML.

### **WINHELP**

The third version of the directory is in 32-bit Windows Help format. This version is for users of Windows 95 or Windows NT only. (It does not work with Windows 3.1.) The help version offers the same links, illustrations, table of contents, and search capability, but it is much faster than the HTML versions of the directory. The Help version works in harmony with Netscape and Internet Explorer. Other browsers are not supported. When you click on a link in the help file, the web page opens in your web browser. By keeping the help file open, you can quickly switch between the directory and live web pages.

To open the Help Directory, double-click the "WinHelp Directory" icon in the program group. The help file resides in the \WINHELP directory of the CD-ROM, as \WINHELP\NRPWWW32.HLP.

### **LICENSE AGREEMENT**

This CD-ROM software product is copyrighted by New Riders Publishing and its licensors. All rights are reserved. You are licensed to use this software on a single computer. You may copy the software as needed to facilitate your use on a single computer. Making copies of the software for any other purpose is a violation of the United States copyright laws.

### **DISCLAIMER**

This software is sold AS IS without warranty of any kind, either expressed or implied, including but not limited to the implied warranties of merchantability and fitness for a particular purpose. Neither the publisher nor its dealers or distributors assumes any liability for any alleged or actual damages arising from the use of this software. (Some states do not allow the exclusion of implied warranties, so the exclusion may not apply to you.)

